

## ACCESSING THE NETSCC MIS USING A MAC

The default web browser on a Mac is Safari so this document covers browser-related issues you may have when using NETSCC MIS on a Safari browser. Other browsers may be used but are not supported for MIS use.

These instructions are based on using Mac OS X version 10.7.5 and Safari version 6.0.5. Instructions may differ slightly for other versions.

[Cookies](#) – use of cookies in the NETSCC MIS (essential!)

[Popups](#) – screens don't appear when expected

[Spell Checking](#) – checking spelling as you enter text in text boxes

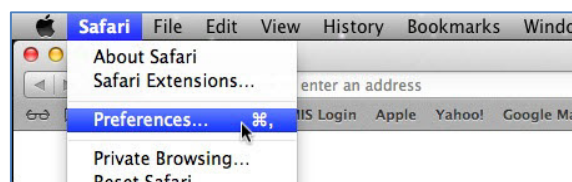
[PDF Bookmarks](#) – using bookmarks to navigate a PDF file

### Cookies

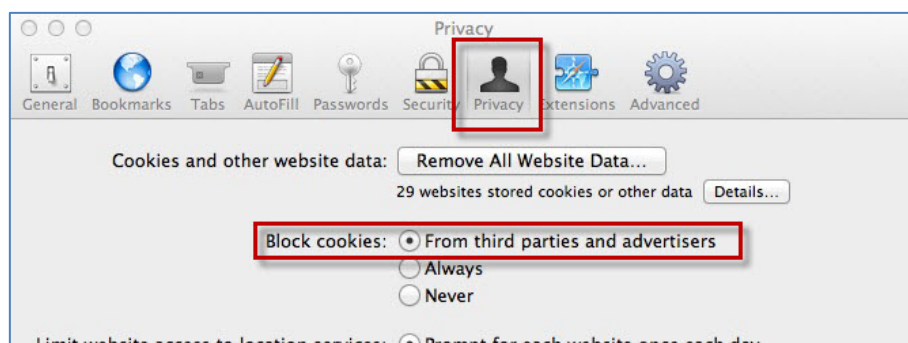
Cookies are small files which are put on your hard drive by a web application usually to store your name, preferences etc. They are not programs and they are harmless. The NETSCC MIS uses cookies to store information about the MIS session. If cookies are switched off you will be unable to logon to the NETSCC MIS.

To ensure your Cookies setting is correct.

1. Select the Safari menu and choose Preferences.



2. Click the Privacy button and make sure Block Cookies is not set to "Always" (we recommend you choose "From third parties and advertisers").



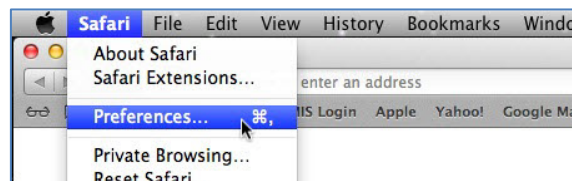
## Popups

Popups are used in the NETSCC MIS to provide additional screens, for example when you view a PDF. If popups are blocked, some functionality will not work.

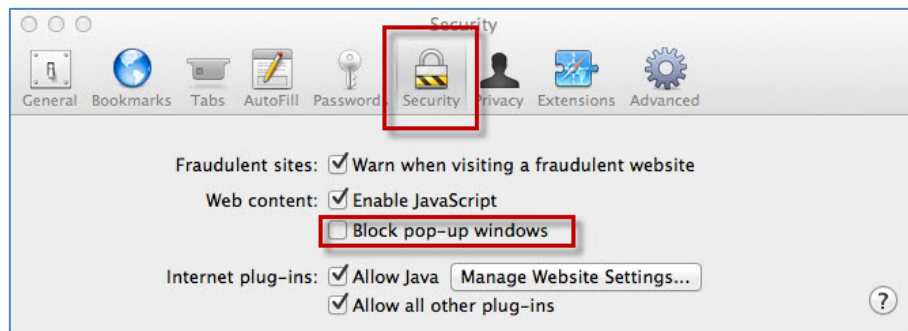
*\*You will need to turn off this popup blocker in order to access PDFs through the MIS. However, you may wish to turn the popup blocker back on afterwards to stop any popups from any other websites that you use.*

To turn off your Popup blocker.

1. Select the Safari menu and choose Preferences.

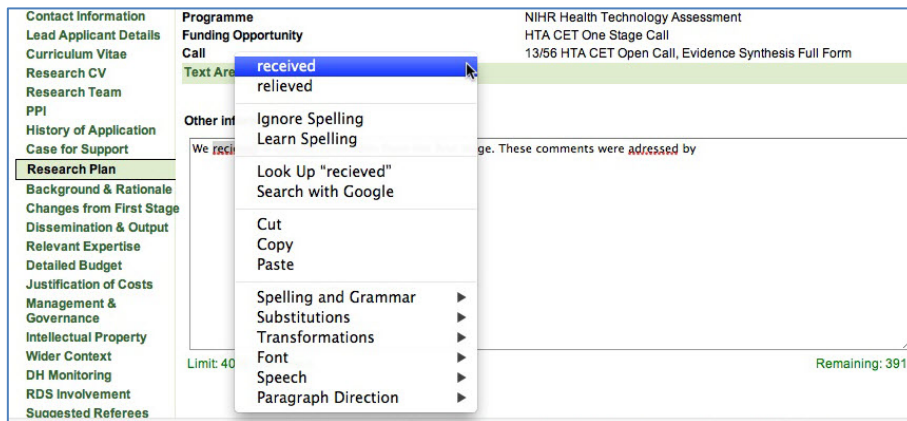


2. Click the Security button and ensure Block pop-up windows is not ticked.



## Spell Checking

When using Safari on a Mac there is an inbuilt spell checker (and predictive text option). Misspelt words (after the predictive text feature has tried to guess what you wanted to write) are shown underlined in red. Ctrl-click the underlined word to see spelling suggestions – you can choose one of the words suggested or ignore the suggested changes.



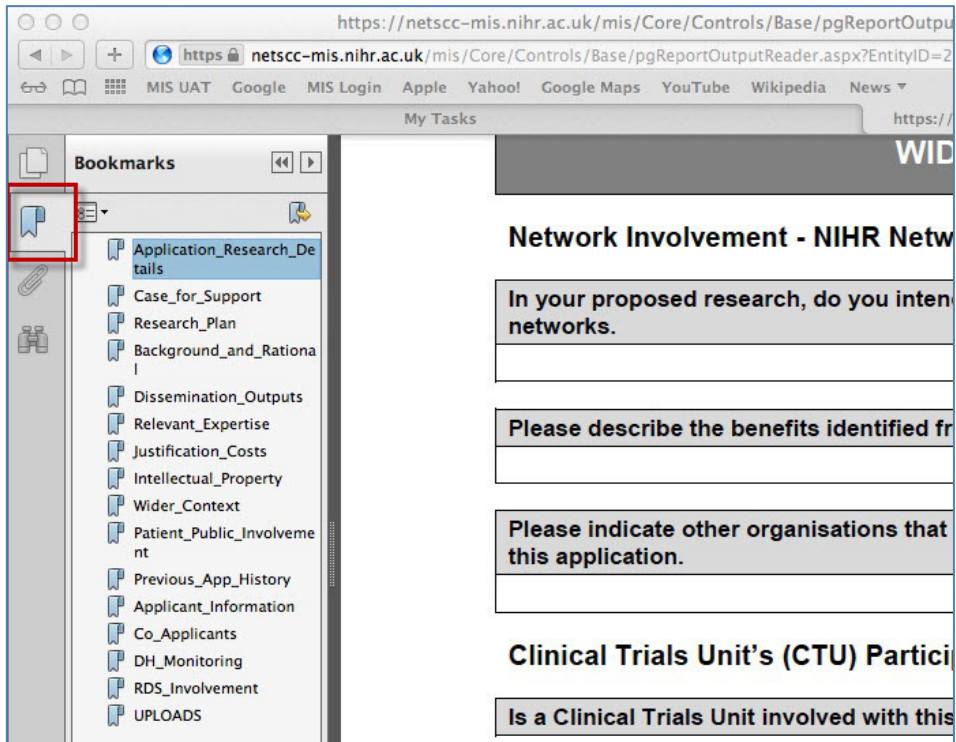
## PDF Bookmarks

To help you navigate around PDFs in NETSCC MIS, bookmarks have been set up within each PDF document.

1. When viewing PDF documents within MIS (by clicking 'View PDF' buttons), the PDF will open in the Safari PDF viewer.
2. If you cannot see the Navigation Pane (down the left side of the screen) Ctrl-click anywhere in the PDF and select Show Navigation Pane Buttons.



3. When the Navigation Pane is shown click the bookmark icon to show the document bookmarks.



This is one of a number of technical support documents available for researchers using the NETSCC MIS. Further technical support documents can be found at on the [NIHR website](#)