

CRN Greater Manchester – life sciences and healthcare innovation factsheet

Life Sciences and Healthcare Innovation

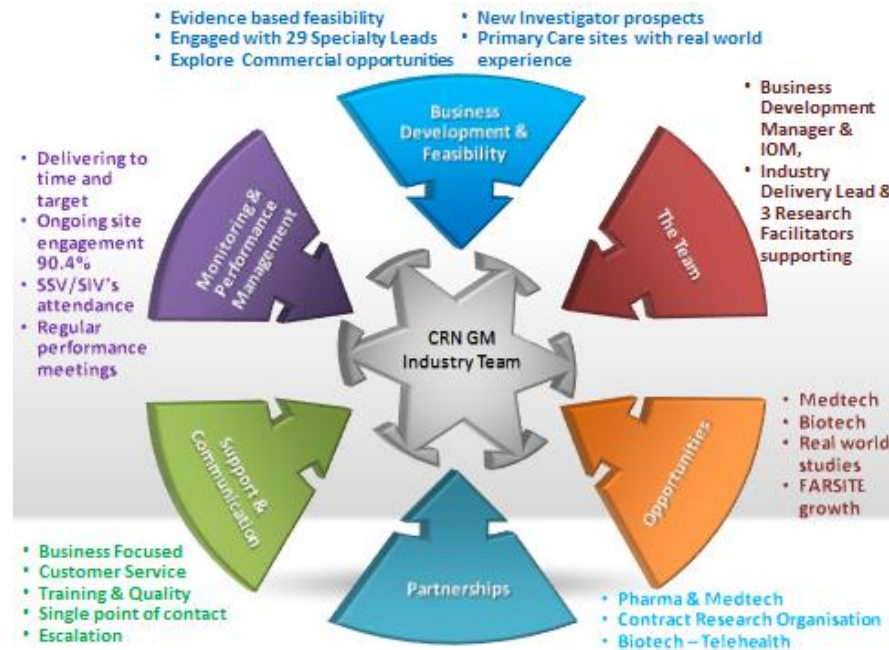
Manchester is serious about healthcare research and innovation. The Greater Manchester NIHR Clinical Research Network is committed to delivering research which improves our patients' health and NHS services. We have a strong track record of collaboration with life sciences companies and are passionate about the contribution that clinical research can make to patient care. We provide dedicated research support provision, keen research teams embedded within local health services and competitive performance data that demonstrate our local strengths and opportunities. The network is a major plank in Manchester's integrated academic health science system (Health Innovation Manchester) which unites our research infrastructure with health and social care provision as part of the Greater Manchester Health and Social Care Partnership (GMHSP).

Facilities and Infrastructure

Our HQ sits at the heart of Europe's largest clinical academic campus and is home to extensive experimental and early phase facilities including three integrated NIHR Clinical Research Facilities. Between them they provide our NHS organisations with access to adult and paediatric early phase capability, a specialised Respiratory and Allergy centre and dedicated oncology support within the NIHR/CRUK Clinical Research Facility at the Christie - one of the world's largest and most prestigious cancer centres that cares for more than 40,000 patients a year.

The region is home to one of the most significant biomedical industry clusters in the UK. It is the location for >350 companies and is particularly well served with specialist accommodation for SMEs through to corporate HQs and manufacturing. Manchester Science Partnerships (MSP) is an internationally renowned science park anchored by a set of partnerships between the universities, hospital trusts and the city council. Both the centrally located Citylabs and the extensive Alderley Park campus are dedicated Life Science Enterprise Zones. Located between them is the world's most advanced MediPark currently in development, itself within the Manchester Airport Enterprise Zone.

Greater Manchester's Dedicated Life-sciences Support Services



16 research active Trusts 15/16

Trust	Studies	Recruitment
CENTRAL MANCHESTER UNIVERSITY HOSPITALS NHS FOUNDATION TRUST	342	8757
THE CHRISTIE NHS FOUNDATION TRUST	188	1066
SALFORD ROYAL NHS FOUNDATION TRUST	184	4398
UNIVERSITY HOSPITAL OF SOUTH MANCHESTER NHS FOUNDATION TRUST	137	4306
PENNINE ACUTE HOSPITALS NHS TRUST	124	5084
EAST LANCASHIRE HOSPITALS NHS TRUST	79	1487
WRIGHTINGTON, WIGAN AND LEIGH NHS FOUNDATION TRUST	67	714
MANCHESTER MENTAL HEALTH AND SOCIAL CARE TRUST	52	1187
BOLTON NHS FOUNDATION TRUST	50	715
EAST CHESHIRE NHS TRUST	43	571
STOCKPORT NHS FOUNDATION TRUST	42	352
GREATER MANCHESTER WEST MENTAL HEALTH NHS FOUNDATION TRUST	35	651
PENNINE CARE NHS FOUNDATION TRUST	28	639
TAMESIDE HOSPITAL NHS FOUNDATION TRUST	26	625
BRIDGEWATER COMMUNITY HEALTHCARE NHS FOUNDATION TRUST	3	72
NORTH WEST AMBULANCE SERVICE NHS TRUST	2	5

13 research active Clinical Commissioning Groups 15/16

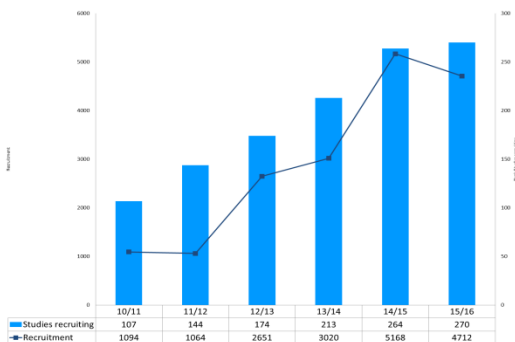
CCG	Recruitment	Studies
NHS SALFORD CCG	24	1789
NHS CENTRAL MANCHESTER CCG	16	257
NHS BOLTON CCG	15	82
NHS OLDHAM CCG	14	154
NHS STOCKPORT CCG	12	282
NHS BURY CCG	11	82
NHS SOUTH MANCHESTER CCG	11	932
NHS EASTERN CHESHIRE CCG	9	787
NHS TRAFFORD CCG	8	884
NHS HEYWOOD, MIDDLETON AND ROCHDALE CCG	8	66
NHS TAMESIDE AND GLOSSOP CCG	7	326
NHS NORTH MANCHESTER CCG	6	40
NHS WIGAN BOROUGH CCG	4	74

Research Collaborations

Greater Manchester attracts world-class collaborations and has been invited to participate in Pfizer's global INSPIRE programme. Research in the NIHR accredited Manchester Academic Health Science Centre, a centre of excellence in translational medicine is underpinned by extensive expertise in informatics and e-health alongside precision medicine. GSK chose to run its world-first ground-breaking EMR-enabled Salford Lung studies in GM thanks to our advanced informatics.

*data correct as of 31 March 2016

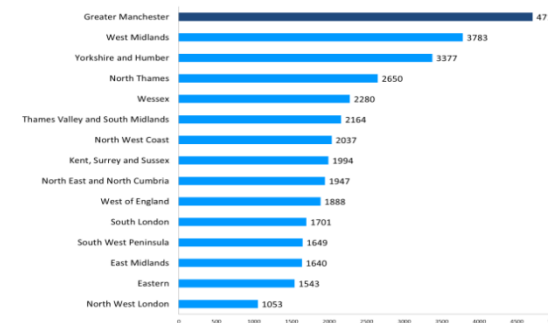
Increasing numbers of Life Sciences Studies



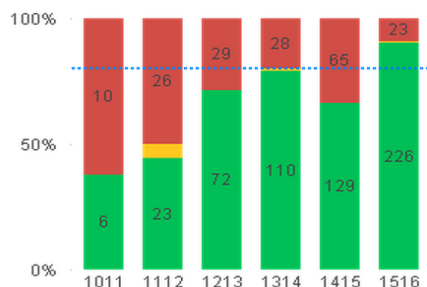
2015/16 Delivery performance to time and target 90.4%

2015/16 Network site recruitment to time and target						
LCRN	Closed Studies with Network Supported Sites	Unique Network Supported Sites in LCRN	Total No. Network Supported Sites	% Sites Recruited to Target	% Sites Recruited to Time	% Sites Passed RTT
Greater Manchester	161	94	250	90.4%	100.0%	90.4%
North East and North Cumbria	90	27	113	79.6%	100.0%	79.6%
Thames Valley and South Midlands	72	19	78	71.8%	100.0%	71.8%
East Midlands	121	24	152	71.7%	100.0%	71.7%
North West Coast	134	40	161	67.1%	100.0%	67.1%
South London	168	25	200	61.5%	100.0%	61.5%
Wessex	107	24	141	56.7%	100.0%	56.7%
North Thames	181	35	256	54.7%	100.0%	54.7%
Yorkshire and Humber	153	49	239	54.4%	100.0%	54.4%
South West Peninsula	89	35	153	54.2%	100.0%	54.2%
West Midlands	170	46	252	52.8%	100.0%	52.8%
Eastern	111	32	161	50.9%	100.0%	50.9%
West of England	91	33	123	48.8%	100.0%	48.8%
North West London	103	18	107	48.6%	100.0%	48.6%
Kent, Surrey and Sussex	89	34	120	42.5%	100.0%	42.5%

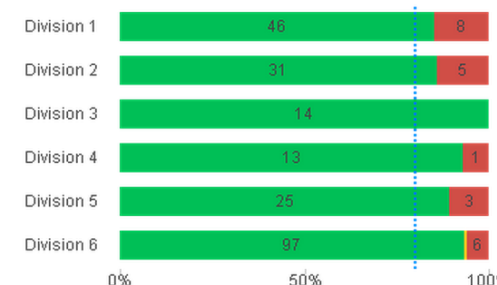
Top national recruitment for commercial studies 15/16



Consistently improving trial delivery



Consistent delivery across Clinical Specialties



GM 3rd highest number of study sites and highest delivery percentage

Notable recruitment achievements

- 5 UK 1st patients and 5 top recruiting sites 2015/16
- 6 global 1st patients 2014/16
- 26 Greater Manchester PIs nationally celebrated

CONTACT US

NIHR Clinical Research Network

Greater Manchester

Central Manchester University Hospitals

NHS Foundation Trust, M13 9WL

Phone: +44 (0)161 701 5600

E-mail: industry.crngm@cmft.nhs.uk

Twitter: [@NIHRCRN_gman](https://twitter.com/NIHRCRN_gman)

Webpage: <https://www.crn.nihr.ac.uk/greater-manchester/>



Real world experience

- Salford Lung Study is a world first - a new way to explore how effective research treatments are in the real world
- Supported by our feasibility and recruitment system, FARSITE
- GM is committed to delivering real world outcomes for real people

*data correct as of 31 March 2016